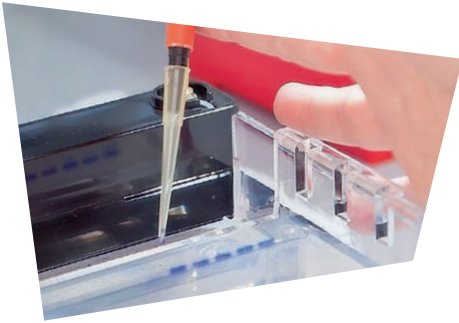


AGAROSSES



-28%



**DNase-free
RNase-free**

| Product | Purity | Application | Art. No. | Pack Qty. | € | € |
|--------------------|---|---|----------|-----------|---------------------|-----------------|
| Standard | for DNA/RNA-electrophoresis | General agarose for routine gels, student's courses, and standard analyses (1 kb-20 kb). | 3810.1 | 10 g | 14,95 | 10,75 |
| | | | 3810.2 | 100 g | 61,20 | 44,00 |
| | | | 3810.3 | 500 g | 242,85 | 174,85 |
| | | | 3810.4 | 1 kg | 396,70 | 285,55 |
| NEEO ultra-quality | low electroendosmosis (EEO = 0,05-0,13) | High-quality agarose for all general applications (500 bp-20 kb). | 2267.1 | 10 g | 17,75 | 12,40 |
| | | | 2267.2 | 100 g | 84,85 | 59,30 |
| | | | 2267.5 | 250 g | 195,15 | 136,55 |
| | | | 2267.4 | 500 g | 370,90 | 259,60 |
| | | | 2267.3 | 1 kg | 622,45 | 435,70 |
| Tablets | 0,5 g agarose/tablet | Standard agarose with low EEO, for routine analyses (≥300 bp). | HP67.1 | 10 g | 20,35 | 14,60 |
| | | | HP67.2 | 50 g | 70,45 | 50,65 |
| | | | HP67.3 | 100 g | 123,10 | 88,55 |
| | | | HP67.4 | 250 g | 276,30 | 198,85 |
| HR-PLUS | for analytical gels | Special agarose for use in the main analytical range (100 bp-3 kb). | HP30.1 | 10 g | 42,90 | 30,85 |
| | | | HP30.2 | 100 g | 267,70 | 192,65 |
| | | | HP30.3 | 500 g | 1.073,95 | 773,15 |
| High Resolution | for small fragments | Special agarose for PCR gels and small DNA fragments. | K297.1 | 10 g | 50,00 | 35,95 |
| | | | K297.2 | 100 g | 321,45 | 231,35 |
| | | | K297.3 | 500 g | 1.396,45 | 1.005,35 |
| GTQ | genetic engineering quality | Especially tested agarose for gel elution and biomolecular approaches (500 bp-20 kb). | 6352.1 | 10 g | 23,15 | 16,60 |
| | | | 6352.2 | 100 g | 144,60 | 104,05 |
| | | | 6352.4 | 500 g | 600,95 | 432,60 |
| Low Melt | with low melting and gelling temperature | Particularly for gel elution and in-gel-application in a wide size range (500 bp-20kb). | 6351.1 | 5 g | 34,95 | 24,45 |
| | | | 6351.5 | 25 g | 145,15 | 101,55 |
| | | | 6351.2 | 100 g | 504,20 | 352,90 |
| | | | 6351.4 | 500 g | 2.096,25 | 1.467,35 |
| LM/PCR | with low melting and gelling temperature, genetic engineering quality | Particularly for gel elution of small fragments (50 bp-1500 bp). | HP31.1 | 5 g | 37,55 | 26,95 |
| | | | HP31.2 | 100 g | 514,95 | 370,70 |
| | | | HP31.3 | 250 g | 1.052,45 | 757,70 |
| Super LM | with particularly low melting and gelling temperature | Particularly for gel elution from melted agarose, capillary electrophoresis and in-gel processing (≥1000 bp). | HP45.1 | 5 g | 37,55 | 26,95 |
| | | | HP45.2 | 100 g | 514,95 | 370,70 |
| | | | HP45.3 | 250 g | 1.052,45 | 757,70 |
| Broad Range | BioScience-Grade | For gel electrophoresis, total size range (200 bp-40 kb). | T846.1 | 10 g | 22,05 | 15,85 |
| | | | T846.2 | 100 g | 116,65 | 83,95 |
| | | | T846.3 | 500 g | 499,90 | 359,90 |
| Pulsed-Field | for Pulsed Field electrophoresis, genetic engineering quality | Special agarose for separation of large fragments (20-50 kb). | 3771.1 | 10 g | 27,45 | 19,70 |
| | | | 3771.2 | 25 g | 50,00 | 35,95 |
| | | | 3771.3 | 100 g | 155,90 | 112,20 |
| | | | 3771.4 | 250 g | 321,45 | 231,35 |
| MEEO ultra-quality | medium electroendosmosis (EEO = 0,16-0,19) | Special agarose for immuno, countercurrent, serum and antibody electrophoresis (500 bp-10 kb). | 2268.1 | 10 g | 18,85 | 13,55 |
| | | | 2268.2 | 100 g | 104,20 | 74,95 |
| | | | 2268.4 | 500 g | 439,70 | 316,50 |
| | | | 2268.3 | 1 kg | 740,70 | 533,25 |
| HEEO ultra-quality | high electroendosmosis (EEO = 0,23-0,26) | Special agarose for protein separation and countercurrent electrophoresis. | 2269.1 | 10 g | 20,10 | 14,45 |
| | | | 2269.2 | 100 g | 110,65 | 79,60 |
| | | | 2269.3 | 1 kg | 779,40 | 561,15 |

All lots of Roti®agarose are quality tested by electrophoresis.

Special prices valid from 4th of October to 31st of December 2016

PAGE Ready-Made Solutions

-28%

Acrylamide-Bisacrylamide solutions for standard gels

| Product | Conc. | Acrylamide : bisacrylamide | Art. No. | Pack Qty. | € | € |
|--|-------|----------------------------|----------|-----------|------------------|--------------|
| Rotiphorese® Gel 30 (37,5:1) -30% | 30 % | 37,5 : 1 | 3029.3 | 250 ml | 23,15 | 16,15 |
| | | | 3029.2 | 500 ml | 36,05 | 25,20 |
| | | | 3029.1 | 1 l | 60,75 | 42,50 |
| Rotiphorese® Gel 40 (37,5:1) | 40 % | 37,5 : 1 | T802.2 | 250 ml | 27,85 | 20,05 |
| | | | T802.1 | 1 l | 67,20 | 48,35 |
| Rotiphorese® Gel 40 (29:1) | 40 % | 29 : 1 | A515.2 | 250 ml | 31,10 | 22,35 |
| | | | A515.1 | 1 l | 76,25 | 54,85 |
| Rotiphorese® Gel 40 (19:1) | 40 % | 19 : 1 | 3030.2 | 250 ml | 28,95 | 20,80 |
| | | | 3030.1 | 1 l | 70,45 | 50,65 |

Acrylamide-Bisacrylamide solutions for fluorescence detected gels

| Product | Conc. | Acrylamide : bisacrylamide | Art. No. | Pack Qty. | € | € |
|---|-------|----------------------------|----------|-----------|-------------------|-------|
| Rotiphorese® NF-Acrylamide/ Bis-solution 30 % (29:1) | 30 % | 29 : 1 | A124.1 | 250 ml | 44,00 | 31,65 |
| | | | A124.2 | 1 l | 134,40 | 96,75 |
| Rotiphorese® NF-Acrylamide/Bis-solution 40 % (19:1) | 40 % | 19 : 1 | A516.1 | 250 ml | 46,70 | 32,90 |
| Rotiphorese® NF-Acrylamide/Bis-solution 40 % (29:1) | 40 % | 29 : 1 | A121.1 | 250 ml | 37,10 | 26,65 |

Acrylamide-Bisacrylamide solutions for manual sequence gels

| Product | Contents | Art. No. | Pack Qty. | € | € |
|---|--|----------|-----------|------------------|--------------|
| Rotiphorese® Sequencing gel concentrate -30% | Acrylamide : bisacrylamide at a ratio 19 : 1 and 50 % urea | 3043.2 | 100 ml | 12,60 | 8,75 |
| | | 3043.1 | 1 l | 55,40 | 38,75 |
| Rotiphorese® Sequencing gel diluent | 50 % urea | 3047.1 | 1 l | 34,30 | 24,65 |
| Rotiphorese® Sequencing gel buffer concentrate | 10x TBE with 50 % urea | 3050.1 | 250 ml | 22,50 | 16,15 |
| Rotiphorese® DNA sequencing system | 3043.1 + 3047.1 + 3050.1 | A431.1 | 1 kit | 98,40 | 70,75 |

Acrylamide and Bisacrylamide solutions

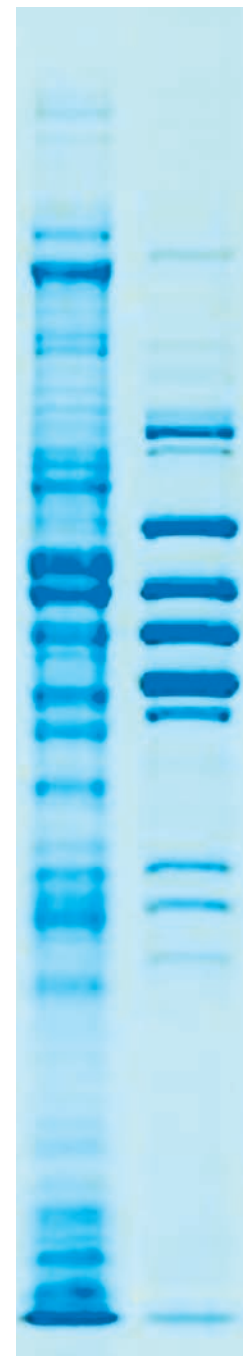
| Product | Concentration | Art. No. | Pack Qty. | € | € |
|-----------------------|-------------------|----------|-----------|------------------|-------|
| Rotiphorese® Gel A | 30 % acrylamide | 3037.2 | 250 ml | 20,10 | 14,45 |
| | | 3037.1 | 1 l | 49,15 | 35,35 |
| Rotiphorese® Gel A-40 | 40 % acrylamide | 7748.1 | 250 ml | 27,45 | 19,70 |
| | | 7748.2 | 1 l | 65,50 | 47,10 |
| Rotiphorese® Gel B | 2 % bisacrylamide | 3039.2 | 250 ml | 18,20 | 13,05 |
| | | 3039.1 | 1 l | 43,55 | 31,30 |

PAGE Basic Compounds

-28%

Acrylamide and Bisacrylamide solids

| Product | Purity | Art. No. | Pack Qty. | € | € |
|------------------------------------|--------------------------------------|----------|-----------|------------------|--------|
| Acrylamide, 4 x cryst. | ≥99,9 %, p.a., 4x cryst. | 7906.1 | 100 g | 31,75 | 22,75 |
| | | 7906.3 | 250 g | 68,30 | 49,10 |
| | | 7906.4 | 500 g | 116,65 | 83,95 |
| | | 7906.2 | 1 kg | 214,50 | 154,35 |
| Acrylamide, BioScience, 4 x cryst. | ≥99,9 %, BioScience Grade, 4x cryst. | 0189.1 | 100 g | 38,60 | 27,75 |
| | | 0189.2 | 500 g | 150,00 | 107,90 |



For safety information and additional data, see our current catalogue or at www.carlroth.com

Contact international

Carl Roth GmbH + Co. KG
Tel.: +49 (0)721 5606-0
Fax: +49 (0)721 5606-149

Schoemperlenstr. 3-5
D-76185 Karlsruhe
www.carlroth.com

Contact Netherlands

Tel.: 0180/51 67 04
Fax: +49 721/56 06-260
bestellingen@carlroth.nl
www.carlroth.nl

Carl Roth GmbH + Co. KG · Schoemperlenstr. 3-5 · D-76185 Karlsruhe
De algemene verkoop- en leveringsvoorwaarden van Carl Roth GmbH + Co. KG, Karlsruhe zijn van toepassing.
Les conditions générales de vente et de livraison de Carl Roth GmbH + Co. KG, Karlsruhe sont en vigueur.

Contact Belgium

Tel.: 03 283 47 10 (Vlaanderen & Brussel) · Fax: +49 721/5606-260
Tél.: 080 447 958 (Wallonie & Bruxelles) · Fax: +49 721/5606-259
bestellingen@carlroth.be · commandes@carlroth.be
www.carlroth.be